



24VDC



JIM ESA

SECTIONAL GARAGE DOORS RESIDENTIAL | COMMERCIAL USE

control unit with built-in encoder and receiver
belt or chain driven

1 TO.GO2VA transmitter included

up to 22 m²



CONTROL UNITS:

JM.3ESA ——— CP.J4ESA

JM.4ESA ——— CP.J4ESA

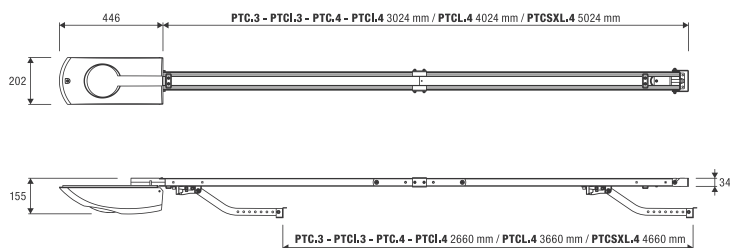


24 Vdc | intensive use

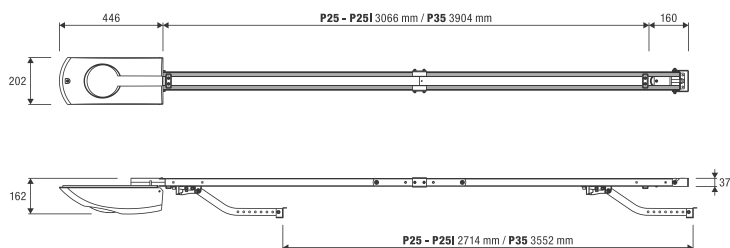
- 24 Vdc gear motor for intensive use, with integrated control unit and encoder
- Adjustable stroke with one mechanical stop included in the belt rails and two in the chain rails
- Anti-crushing system with amperometric obstacle detection
- Operation guaranteed even in the event of a power supply failure through batteries that integrate perfectly into the motor
- Evolved electronics with display and energy saving courtesy light
- The encoder guarantees maximum safety and precision while the gate is moving
- Quick hooking system for connecting the arm to the door plate

Rail not included



□ WITH BELT RAIL



□ WITH CHAIN RAIL





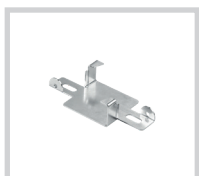
	RAIL	TYPE	H DOOR	PACKAGE	JM.3ESA	JM.4ESA
	PTC.3 9B	8 mm belt	2,5 m	2 pcs of 1.5 m	✓	✗
	PTCI.3 9B	8 mm belt	2,5 m	1 pc of 3 m	✓	✗
	PTCL.3 9B	8 mm belt	3,5 m	2 pcs of 2 m	✓	✗
	PTCI.4 9B	10 mm belt	2,5 m	1 pc of 3 m	✓	✗
	PTC.3	8 mm belt	2,5 m	2 pcs of 1.5 m	✓	✗
	PTCI.3	8 mm belt	2,5 m	1 pc of 3 m	✓	✗
	PTC.4	10 mm belt	2,5 m	2 pcs of 1.5 m	✓	✓
	PTCL.4	10 mm belt	3,5 m	2 pcs of 2 m	✓	✓
	PTCI.4	10 mm belt	2,5 m	1 pc of 3 m	✓	✓
	PTCSXL.4	10 mm belt	4,5 m	5 pcs of 1 m	✓	✓
	P25	chain	2,5 m	2 pcs of 1.4 m	✓	✓
	P25I	chain	2,5 m	1 pc of 2.8 m	✓	✓
	P35	chain	3,5 m	2 pcs of 1.8 m	✓	✓

**PTC.STOP**

Mechanical stop for rail with belt (PTC.3/PTCI.3/PTC.4/PTCL.4/PTCI.4/PTCSXL.4).
Package of 5 pcs.

**PTCR.STOP**

Mechanical stop for rail with belt (PTC.3 9B/PTCI.3 9B/PTCL.3 9B/PTCI.4 9B).
Package of 5 pcs.

**PTC.AR**

Bracket for fast ceiling attachment of JM.3 belt models (PTC).
Package of 5 pcs.

**AU.C25**

Swinging arm for tilt up doors. One mechanical stop for belt guide included.

**JK.UL**

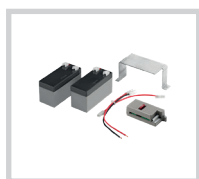
Key unlocking device for sectional doors with belt rail and for counterweight garage doors.

**ZED.MS**

Wire unlocking device for sectional doors with belt rail and for counterweight garage doors.

**AU.MS25**

Wire unlocking device for sectional doors with chain rail.

**JM.CBY**

Accessory with CBY.24V battery charger, 1.2 Ah batteries and support bracket.

**XLB.L**

Flashing light with 24 Vdc power supply. Intermittent or fixed signal lighting can be selected.

**SMART**

Cover compatible with TO.GO transmitters for internal wall mounting.

AUTOMATISMI BENINCÀ SpA • Via del Capitello, 45 • 36066 Sandrigo (VI) ITALY • T +39 0444 751030 • sales@beninca.com

TECHNICAL DATA	JM.3ESA	JM.4ESA*
Power supply	230 Vac (50-60Hz)	230 Vac (50-60Hz)
Motor supply	24 Vdc	24 Vdc
Max absorbed current	0.7 A	1.5 A
Thrust	600 N	1200 N
Opening speed	4.5 ÷ 8.9 m/min	4.5 ÷ 8.9 m/min
Duty cycle	intensive use	intensive use
Protection level	IP40	IP40
Operating temperature	-20°C /+50°C	-20°C /+50°C
Max door surface	11 m²/max	22 m²/max
Limit switch	electronic with encoder	electronic with encoder
Weight	4.8 kg	6.6 kg
Items no. per pallet	50	50

* Available in 115 VAC version