

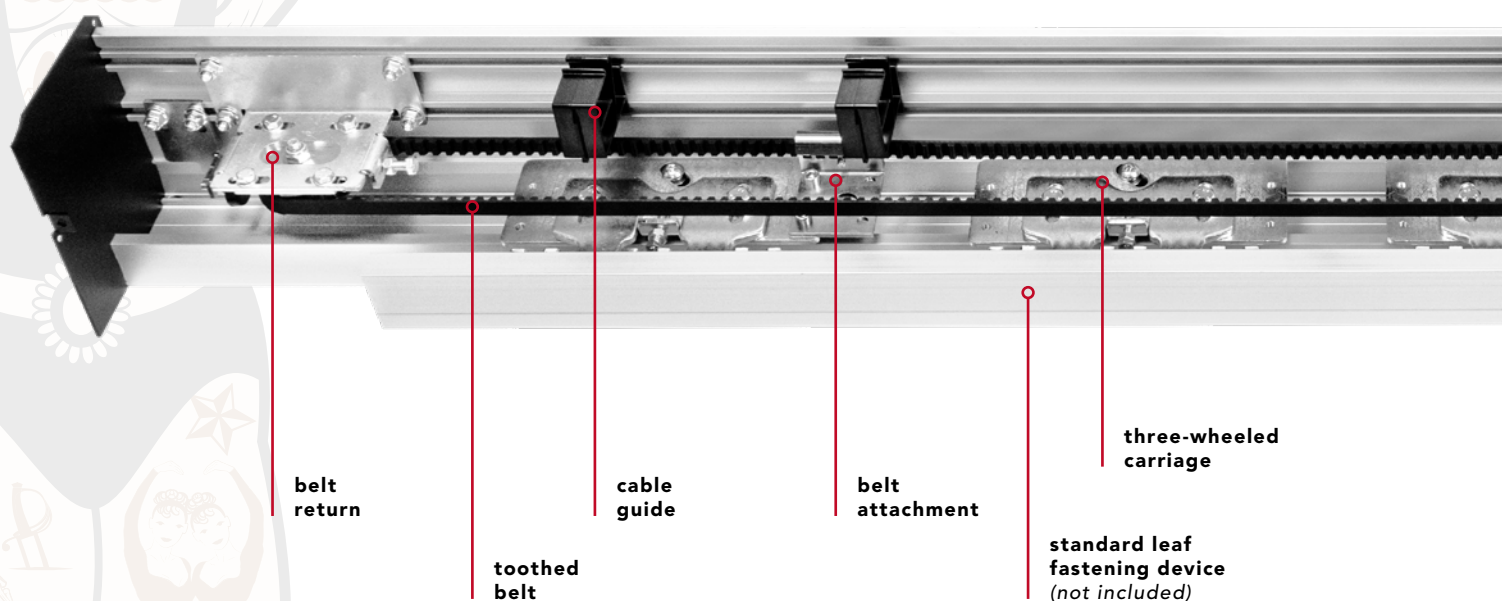


LUCE SUPER HEAVY

Automation for sliding doors up to 500 kg

Luce Super Heavy represents the ideal solution for sliding doors characterised by particularly heavy or large-sized leaves for automated pedestrian access points both in private and public locations: offices, shops and commercial business in general.

The automation is equipped with additional three-wheeled carriages, which ensure great stability of the leaves and facilitate the adjustment both in height and depth.



technical data

power supply	full range 100÷240 Vac 50/60 Hz
power consumption	70 W
power consumption in stand-by	3 W
accessories power supply	24 Vdc = / 1 A max
maximum speed 1 door	0.35 m/s
maximum speed 2 doors	0.7 m/s
maximum load 1 door	400 kg
maximum load 2 doors	250 + 250 kg
type and frequency of use	continuous operation = 100%
operating temperature	-15°C / +50°C
protection degree	IP20
data backup memory	USB flash drive



1 leaf
max. weight
400 kg



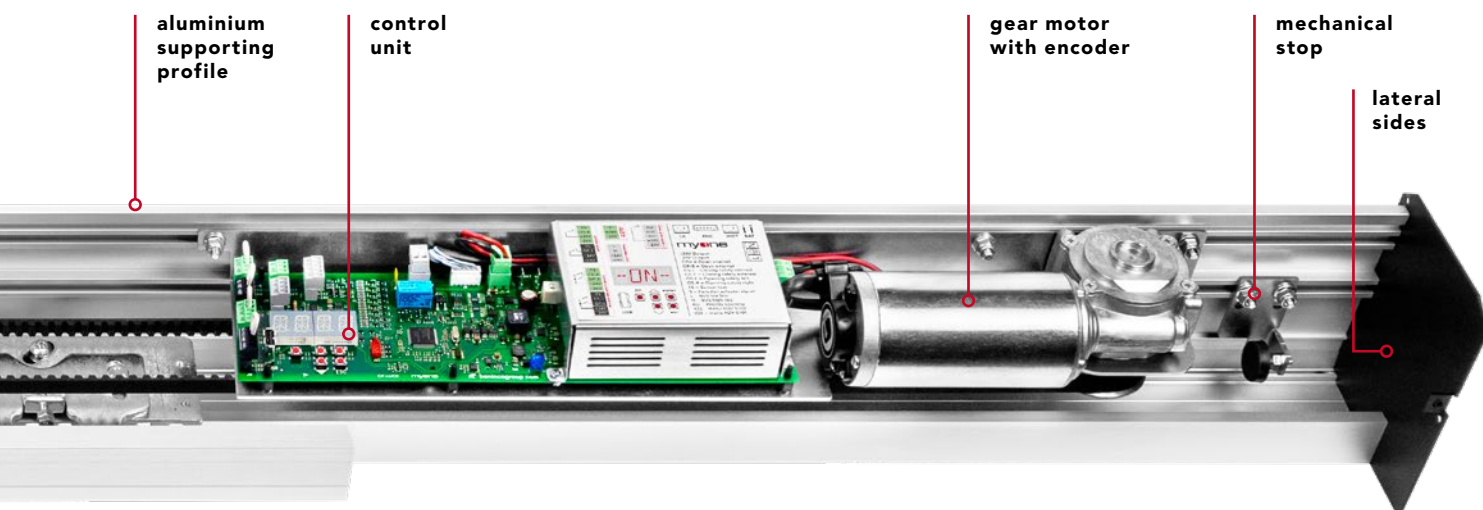
2 leaves
max. weight
250 + 250 kg



Luce Super Heavy is equipped with a control unit with LED alphanumeric display, full-range switching power supply (100-240 V 50/60 Hz) and battery charger.

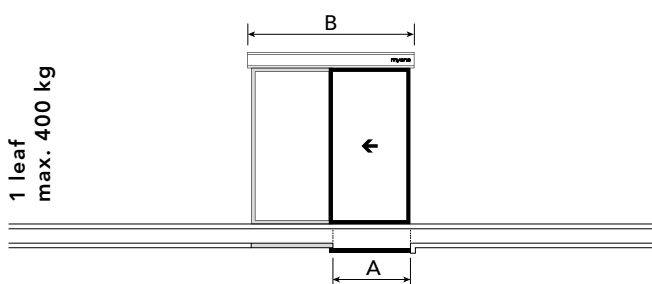
The presence of a USB connector makes it simple and quick to update the firmware as well as to copy parameters and operating logics to a new system instantly. Continuous operation guaranteed.

Available in single-leaf (up to 400 kg) or double-leaf (up to 250+250 kg) versions.

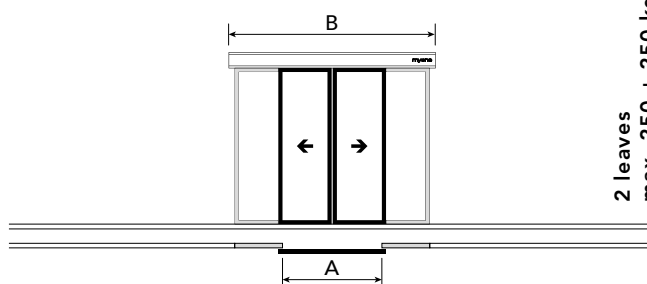


preassembled sliding doors

**The values of the passage size (A) and of the leaf are indicative and include an overlap of around 50 mm.*



1 leaf
max. 400 kg



2 leaves
max. 250 + 250 kg

	A	B
LUCESH1901	900 mm	1900 mm
LUCESH2101	1000 mm	2100 mm
LUCESH2501	1200 mm	2500 mm
LUCESH2901	1400 mm	2900 mm
LUCESH3301	1600 mm	3300 mm
LUCESH3701	1800 mm	3700 mm
LUCESH4201	2000 mm	4200 mm
LUCESH5001	2450 mm	5000 mm
LUCESH6501	3100 mm	6500 mm

	A	B
LUCESH1902	900 mm	1900 mm
LUCESH2102	1000 mm	2100 mm
LUCESH2502	1200 mm	2500 mm
LUCESH2902	1400 mm	2900 mm
LUCESH3302	1600 mm	3300 mm
LUCESH3702	1800 mm	3700 mm
LUCESH4202	2000 mm	4200 mm
LUCESH5002	2450 mm	5000 mm
LUCESH6502	3100 mm	6500 mm

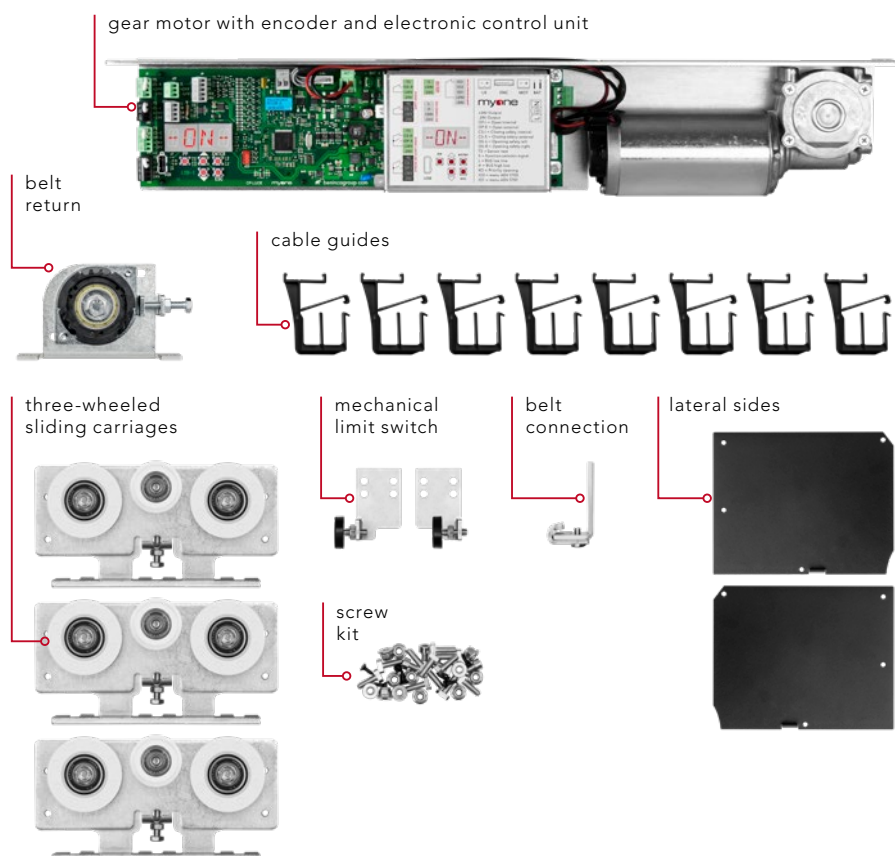
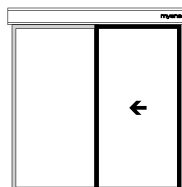
the preassembled operator is made up of:

control unit | gear motor with encoder | three-wheeled sliding carriages | supporting profile | anodised aluminium cover | belt return | mechanical stop | belt | cable guide | screw kit | lateral sides



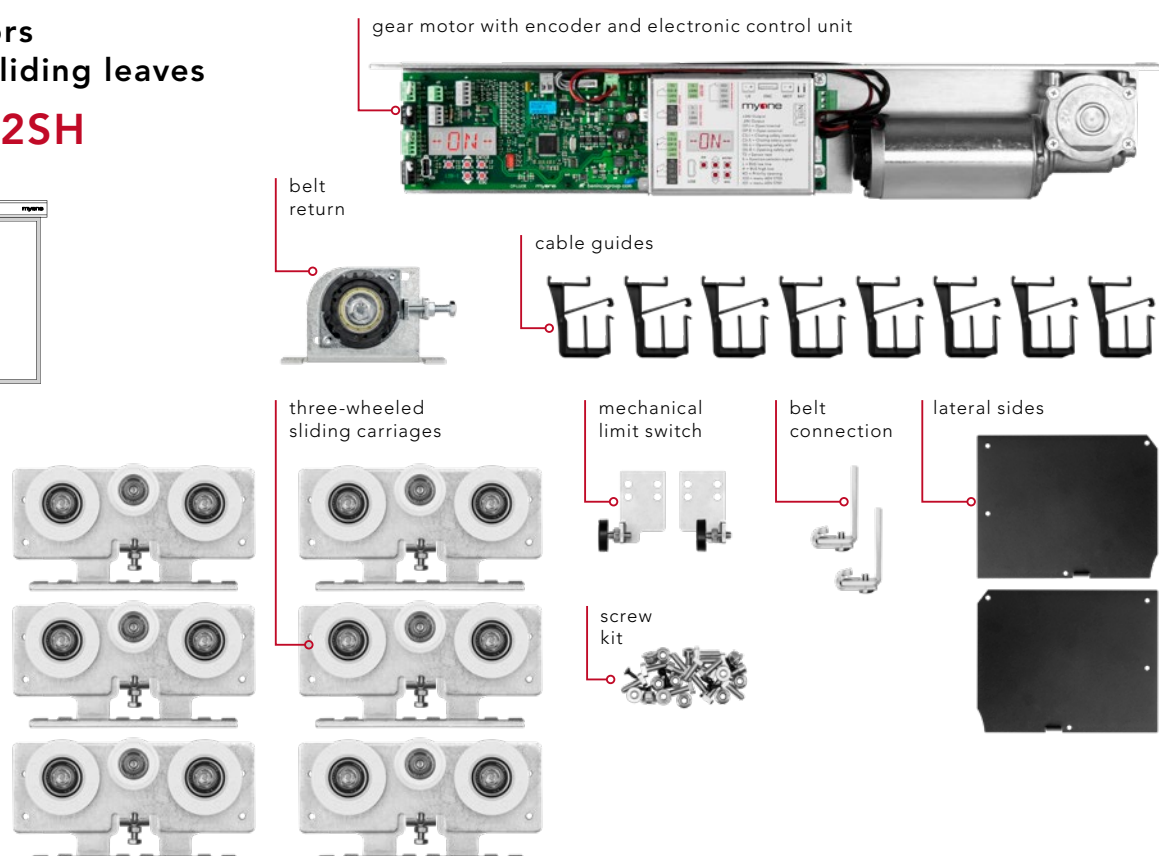
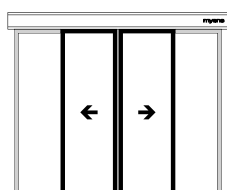
kit for doors with one sliding leaf

KLUCE01SH



kit for doors with two sliding leaves

KLUCE02SH





accessories



AQA

Digital programmer/selector with LCD screen.



31SR0009

Rotary selector for sliding door.
- IP54



31SR0010

Key-operated rotary selector for sliding door.
- IP54



31RD0001

Double technology sensor.
- EN16005
- IP54



31RP0001

Sensor for side protection.
- EN16005
- IP54



99BA0003

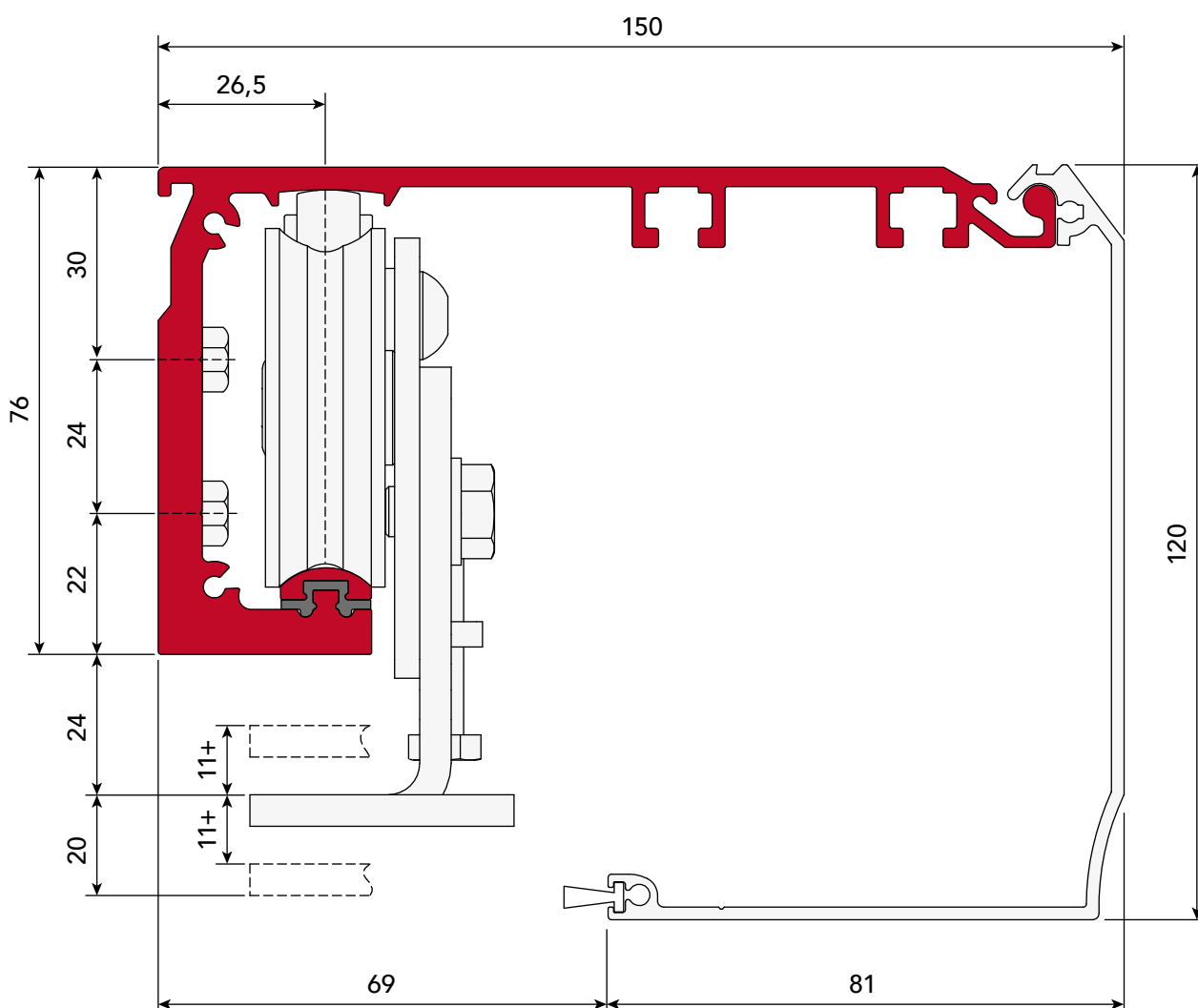
Emergency battery kit with wiring and bracket.



99EB0001

Electromechanical lock kit with release cord.

operator cross-section technical drawing





MYONE Srl

Via Abbate Tommaso, 52
30020 Quarto D'Altino (VE) ITALY

T +39 0422 824384

info@myoneautomation.com
www.myoneautomation.com

751500290_04_23_00

Part of the Benincà family

